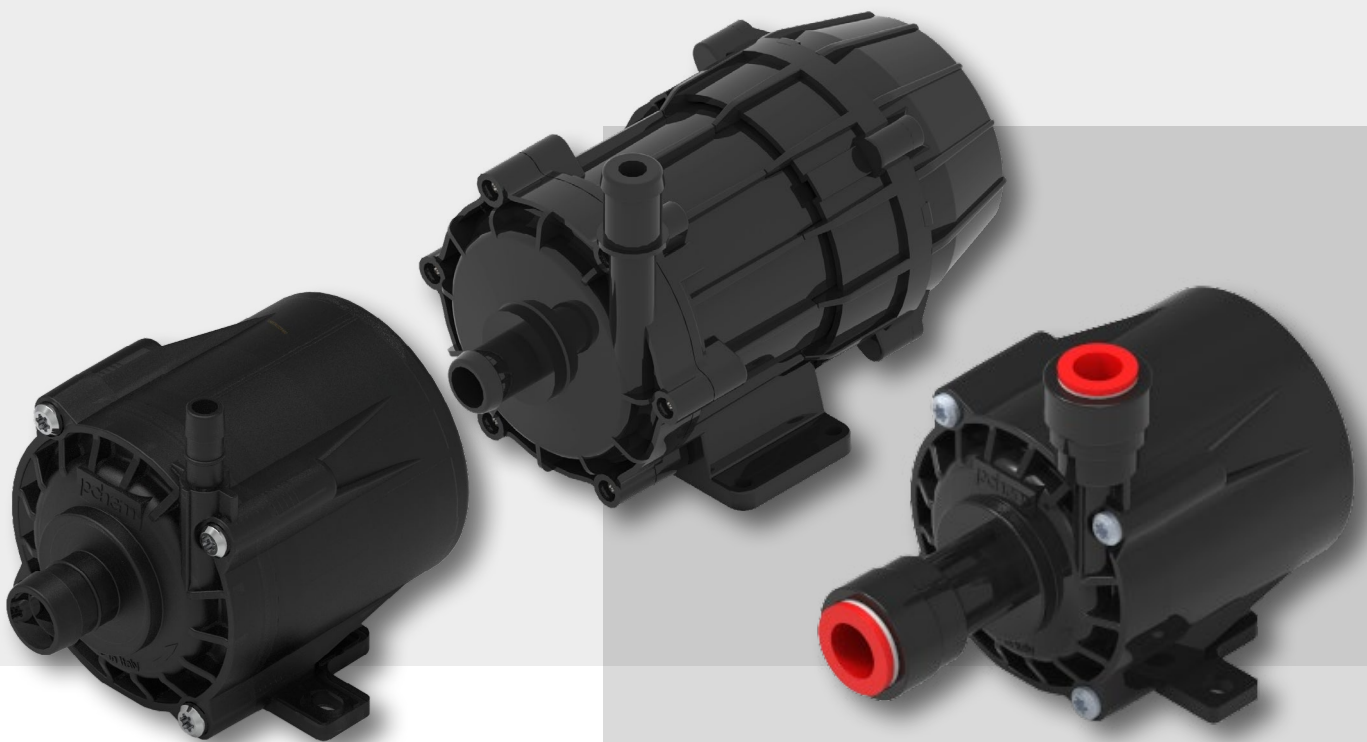


pchem

PIUSI
GROUP



DIRECT DRIVE CANNED PUMPS

EN-2025

CANNED - COMPACT CENTRIFUGAL PUMPS WITH ENCAPSULATED MOTOR



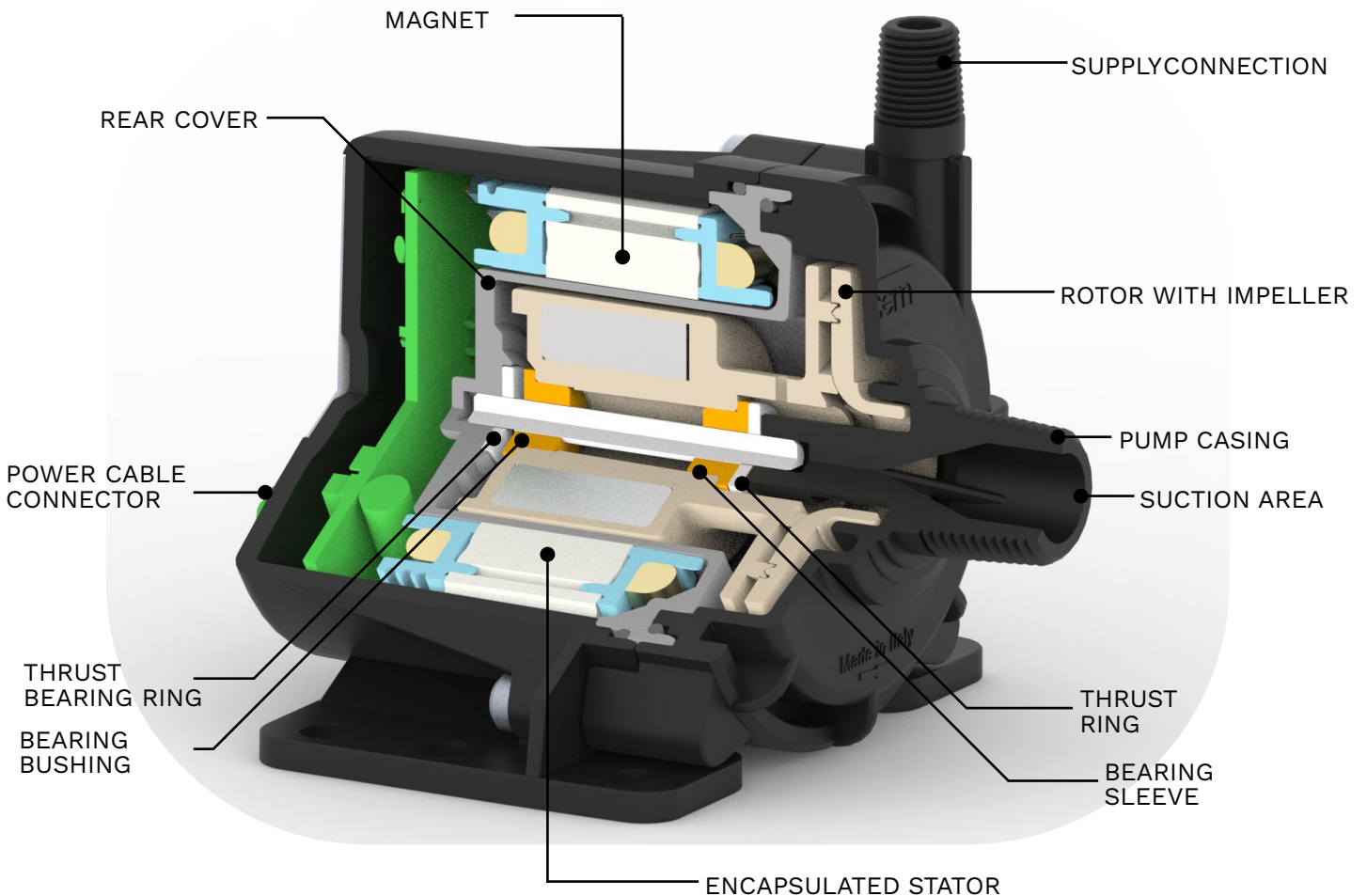
Canned magnetic drive centrifugal pumps offer a safe and reliable solution for fluid transfer.

Thanks to the absence of mechanical seals, these pumps eliminate the risk of leaks while ensuring long operational life.

The magnetic drive technology guarantees quiet and vibration-free operation, making them ideal for critical applications in industries such as chemical processing and refrigeration.

Powered by a low-voltage DC brushless motor designed in-house, they feature advanced electronics to monitor performance and seamlessly integrate with the control systems of the machines they are installed on. The CP series pumps are designed to deliver high performance in a compact format, meeting efficiency and performance requirements.

MAIN COMPONENTS



ADVANTAGES

COMPACT DESIGN

Compact, space-saving pump without seals to prevent liquid leaks.

CONTINUOUS OPERATION

Equipped with a brushless DC motor, making it particularly suitable for continuous operation.

FLOW REGULATION FUNCTION AND INTEGRATED DRIVE TECHNOLOGY

The pump can be controlled via a 1-5V DC signal to regulate and monitor performance.

VARIETY OF CONNECTIONS

Different types of connections are available: GAS/NPT threaded
Hose barb Quick coupling

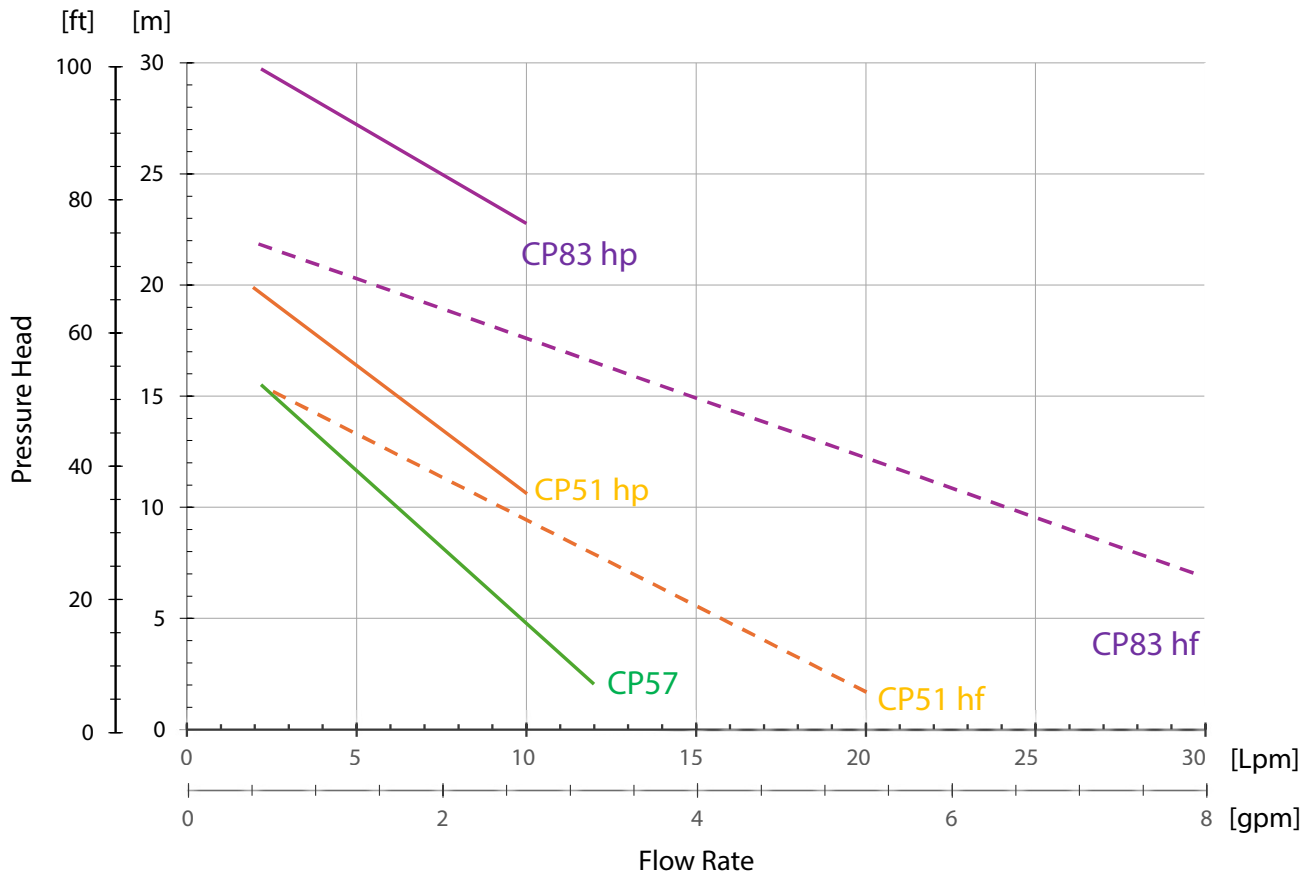
WIDE TEMPERATURE RANGE

The pumps can be installed in environments with temperatures up to 40°C and with fluid temperatures up to 80°C.

TYPICAL APPLICATIONS

- ELECTROLYZERS
- MEDICAL SECTOR
- VARIOUS TYPES OF ANALYZERS
- COOLING SYSTEMS
- PRINTING
- SEMICONDUCTORS
- SURFACE TREATMENT
- SOLAR ENERGY SYSTEMS
- AUTOMOTIVE

MAIN CURVES





PCHEM s.r.l.

Via Brigata Mazzini 35/A

36016 - Thiene (VI) ITALY

Tel.+39 0445 1856565

E-mail: info@pchem-industries.com

www.pchem-industries.com

